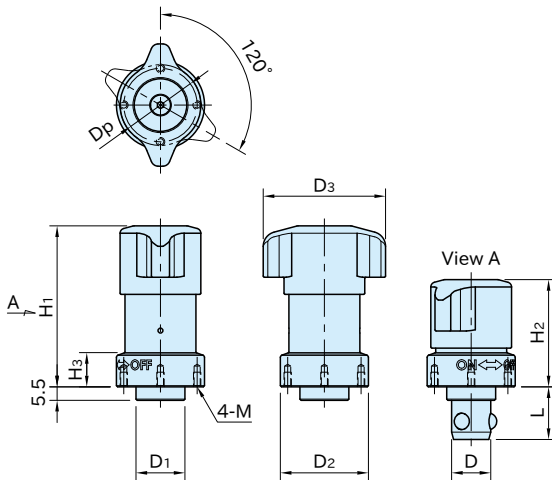




**QCWESA1636-20S**  
(OFF position)



**QCWESA1227-16S**  
(ON position)



(OFF position)

(ON position)

### ★Key Point

Retractable shaft allows sliding movement with clamping forces of 1000 N and 2000 N

| Body                   | Shank                                     | Wedge  | Knob  | Ball   | Spring A                    | Spring B                  |
|------------------------|---|--|---|--|-----------------------------|---------------------------|
| SUS303 stainless steel | SCM440 steel<br>Electroless nickel plated | SCM435 steel<br>Electroless nickel plated<br>Quenched and tempered | SCS13 stainless steel<br>(Equivalent to SUS304) | SUS440C stainless steel<br>Quenched and tempered | Equivalent to SWOSC-V steel | SUS304WPB stainless steel |

| Part Number           | Plate Thickness | D<br>( $-0.05$ ) | D <sub>1</sub><br>(h9) | D <sub>2</sub> | D <sub>3</sub> | L    | H <sub>1</sub> | H <sub>2</sub> | H <sub>3</sub> | M            | Dp |
|-----------------------|-----------------|------------------|------------------------|----------------|----------------|------|----------------|----------------|----------------|--------------|----|
| <b>QCWESA1227-16S</b> | 6~16 *)         | 12               | 16                     | 27             | 35             | 17.5 | 52             | 35             | 10             | M2x0.4Depth4 | 23 |
| <b>QCWESA1636-20S</b> | 6~20 *)         | 16               | 20                     | 36             | 50             | 21.5 | 66             | 44             | 14             | M3x0.5Depth6 | 30 |

| Part Number           | Clamping Force (N) | Holding Force (N) **) | Weight (g) | Locking Receptacles |
|-----------------------|--------------------|-----------------------|------------|---------------------|
| <b>QCWESA1227-16S</b> | 1000               | 2500                  | 190        | QCWES1225-B         |
| <b>QCWESA1636-20S</b> | 2000               | 5000                  | 320        | QCWES1634-B         |

\*) The tolerance should be within  $\pm 0.05$  for 6mm-thick plates.

\*\*) Exceeding the holding force creates a gap of greater than 0.1mm between plates.

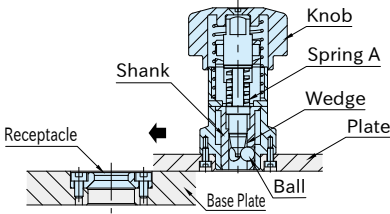
### Supplied with

- **QCWESA1227-16S**:  
4 of socket-head cap screws(stainless steel), M2X0.4-5L
- **QCWESA1636-20S**:  
4 of socket-head cap screws(stainless steel), M3X0.5-6L

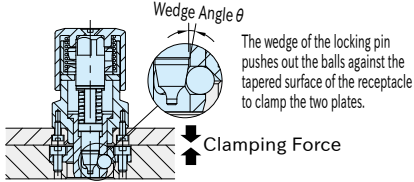
### QCWES-B LOCKING RECEPTACLES



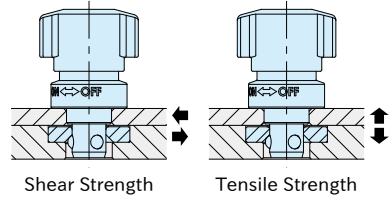
## Feature



The shank retracts at the unclamping position to enable operations without interference with the base plate.



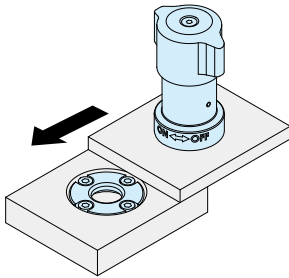
## Mechanical Strength



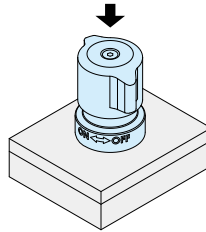
| Part Number    | Heat-resistant Temperature(°C) | Shear Strength (N) | Tensile Strength (N) |
|----------------|--------------------------------|--------------------|----------------------|
| QCWESA1227-16S | 180                            | 10000              | 4000                 |
| QCWESA1636-20S |                                | 15000              | 8000                 |

Shear and tensile strength is allowable load and the fastener could break when it receives bigger load.

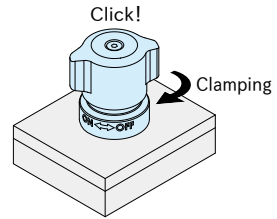
## How To Use



1. Ensure that the knob is positioned at the "OFF" mark.



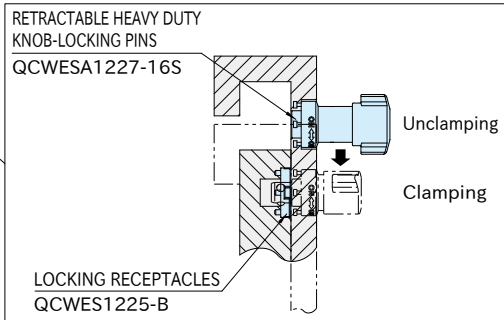
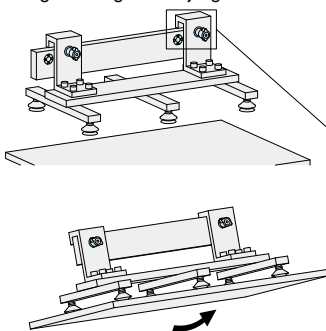
2. Insert the clamp pressing the knob.



3. Turn the knob to the "ON" mark for clamping. The knob clicks when clamped. Turning the knob to the "OFF" position, the shank returns automatically to the unclamping position by the spring.

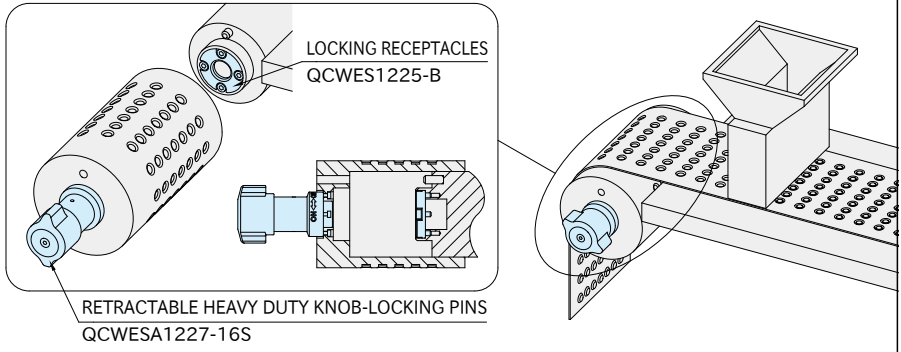
## Application Example

Changes of conveying unit

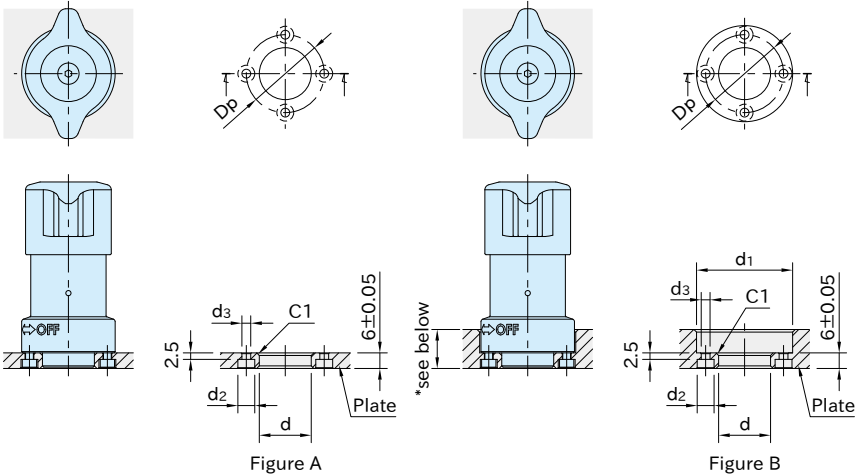


## Application Example

### Changes of rollers for blister packaging



## How To Install

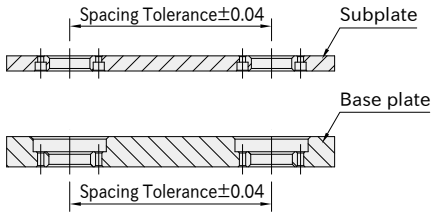


| Part Number           | Plate Thickness    | Figure | d<br>( $+0.10$ / $+0.05$ ) | d <sub>1</sub> | d <sub>2</sub> | d <sub>3</sub> | Dp |
|-----------------------|--------------------|--------|----------------------------|----------------|----------------|----------------|----|
| <b>QCWESA1227-16S</b> | 6                  | A      | 16                         | —              | 4.4            | 2.4            | 23 |
|                       | Over 6, 16 or less | B      |                            | 28             |                |                |    |
| <b>QCWESA1636-20S</b> | 6                  | A      | 20                         | —              | 6.5            | 3.4            | 30 |
|                       | Over 6, 20 or less | B      |                            | 37             |                |                |    |

\*) Height to center of ON/OFF mark: **QCWESA1227-16S**: 12mm, **QCWESA1636-20S**: 15mm  
For use with thick plates than above, add an ON/OFF mark as needed.

## Accuracy

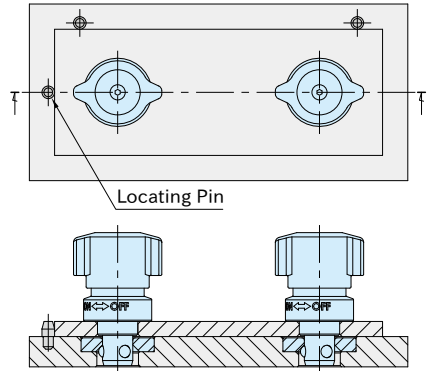
### ■ Machining Accuracy



Spacing tolerance on both the subplate and the base plate should be  $\pm 0.04$ .

### ■ Repeatability

Repeatability  $\pm 0.2$

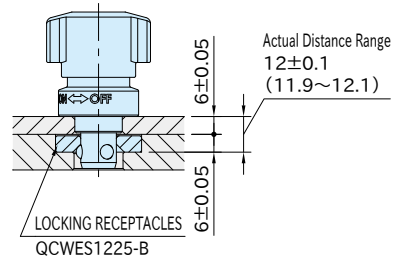
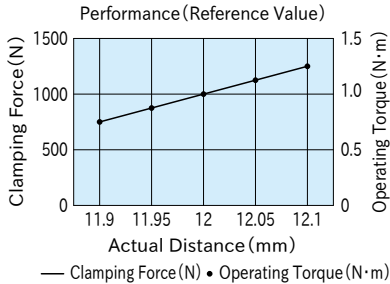


For higher accurate locating, use locating pins.

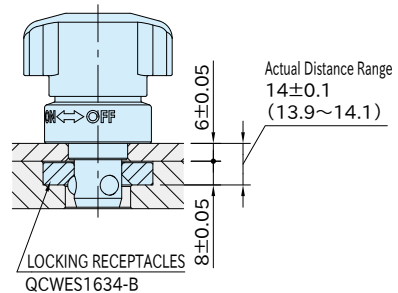
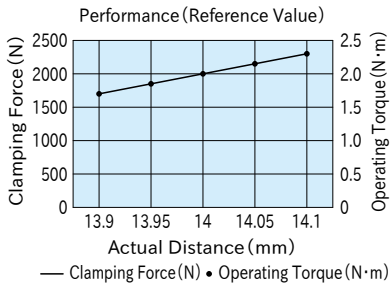
## Performance Curve

### ■ Actual Mounting Distance vs. Clamping Force and Operating Torque

#### QCWESA1227-16S



#### QCWESA1636-20S



## Reference

"How To Install" of [QCWES-B](#) Locking Receptacles