

QCTH / QCTHL / QCTHH QUARTER-TURN CLAMPS

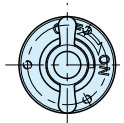
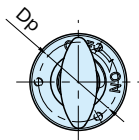
RHS Stainless Steel

IMAO

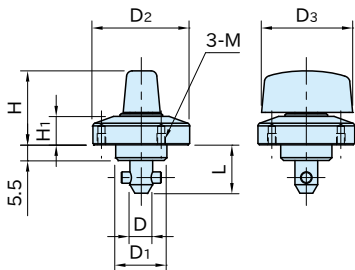
★ **Key Point**
Easy-to-read ON/OFF position



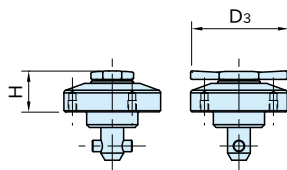
QCTH
(Plastic Knob)



QCTH-SUS
(Stainless Steel)



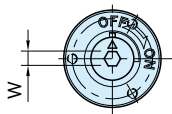
QCTH (Plastic Knob) **QCTH-SUS** (Stainless Steel)



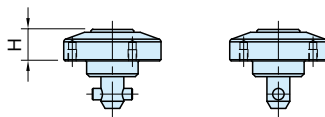
QCTHL-SUS
(Low-height Knob, Stainless Steel)



QCTHL-SUS
(Low-height Knob, Stainless Steel)



QCTHH-SUS
(Hex. Socket Head, Stainless Steel)



QCTHH-SUS
(Hex. Socket Head, Stainless Steel)

Supplied With

- **QCTH** | **QCTH-SUS** | **QCTHL-SUS** | **QCTHH-SUS** 0525-10:
3 of socket-head cap screws (stainless steel), M2×0.4-5L
- **QCTH** | **QCTH-SUS** | **QCTHL-SUS** | **QCTHH-SUS** 0834-14, 0834-20:
3 of socket-head cap screws (stainless steel), M3×0.5-6L

Type	Body, Shank	Pin	Knob	Spring
QCTH	SUS303 stainless steel	SUS304 stainless steel	Polyamide (glass-fiber reinforced) Black	Equivalent to SWOSC-V steel
QCTH-SUS			SCS13 stainless steel (Equivalent to SUS304)	SUS304 stainless steel
QCTHL-SUS				
QCTHH-SUS			—	

Size		Plate Thickness	D (-0.04 -0.08)	D ₁ (h9)	D ₂	L	H ₁	M	D _p	Clamping Force (N)	Holding Force (N)**	Cam Receptacles
QCTH	0525-10	3~10 (*)	5	14	25	15.5	6.5	M2×0.4 Depth 3	21	60	60	QCTH0525-N, QCTH0525-B QCTH0525-N-SUS, QCTH0525-B-SUS
QCTH-SUS												
QCTHL-SUS	0834-14	3~14 (*)	8	18	34	17	10	M3×0.5 Depth 4	28	90	90	QCTH0834-N, QCTH0834-B QCTH0834-N-SUS, QCTH0834-B-SUS
QCTHH-SUS												
	0834-20	12~20				23						

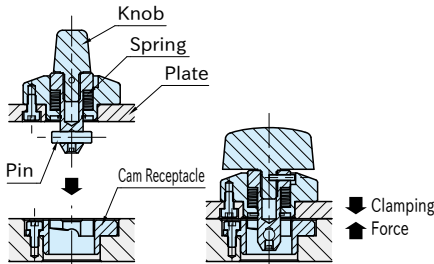
*) Spacer [QCASP] is required for thinner plate than 6mm.

**) Exceeding the holding force creates a gap of greater than 0.1mm between plates.

QCTH (Plastic Knob)				QCTH-SUS (Stainless Steel)			
Part Number	D ₃	H	Weight (g)	Part Number	D ₃	H	Weight (g)
QCTH0525-10	20	19	35	QCTH0525-10-SUS	20	19	40
QCTH0834-14	32	26	105	QCTH0834-14-SUS	32	25.5	130
QCTH0834-20			110	QCTH0834-20-SUS			135

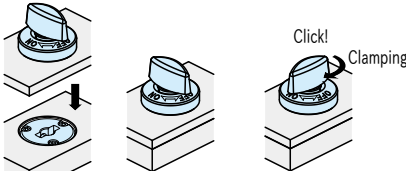
QCTHL-SUS (Low-height Knob, Stainless Steel)				QCTHH-SUS (Hex. Socket Head Stainless Steel)			
Part Number	D ₃	H	Weight (g)	Part Number	H	W	Weight (g)
QCTHL0525-10-SUS	25	11.5	35	QCTHH0525-10-SUS	8	4	30
QCTHL0834-14-SUS	34	15.5	83	QCTHH0834-14-SUS	11	5	75
QCTHL0834-20-SUS			85	QCTHH0834-20-SUS			77

Feature



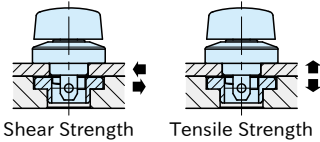
When the pin contacts the cam in the Cam Receptacle, the spring gets compressed to press down the plate.

How To Use



1. Ensure that the knob is positioned at the "OFF" mark.
2. Insert the Quarter-Turn Clamp.
3. Turn the knob to the "ON" mark for clamping. The knob clicks when it is clamped/unclamped. Note: For unclamping, follow back these steps.

Mechanical Strength



Part Number	Heatresistant Temperature(C)	Shear Strength (N)	Tensile Strength (N)
QCTH	130	0525-10	1800
		0834-14	3200
		0834-20	2600
QCTH-SUS	180	0525-10	1800
		QCTHL-SUS 0834-14	3200
		QCTHH-SUS 0834-20	2600

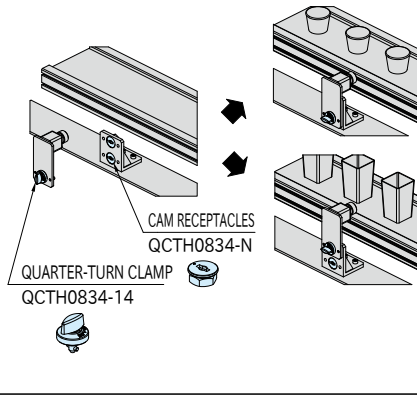
Shear and tensile strength is allowable load and the fastener could break when it receives bigger load.

QCTH-N / QCTH-B CAM RECEPTACLES

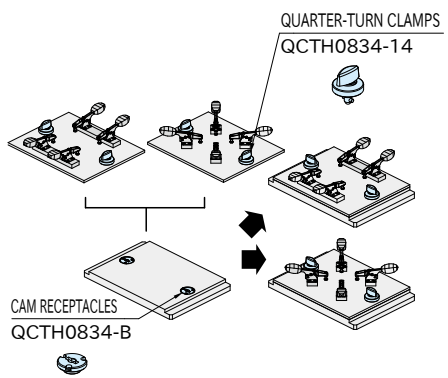


Application Example

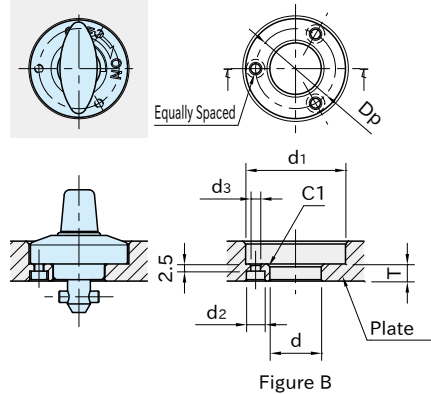
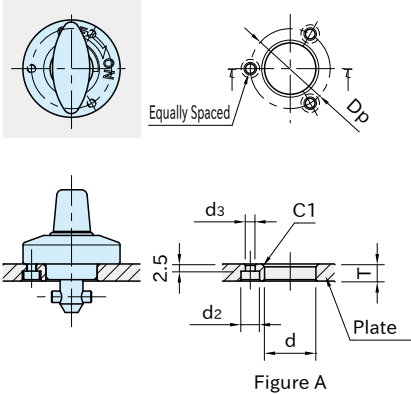
Changes of camera positions



Changes of fixture plates



How To Install



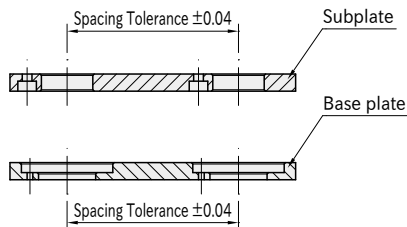
Part Number	Plate Thickness	Figure	d (+0.10 +0.05)	d ₁	T (±0.2)	d ₂	d ₃	D _p
QCTH QCTH-SUS	3 or more, under 6		Spacer [QCASP] is required.					
	6	A	14	—	6	4.4	2.4	21
	Over 6, 10 or less	B		26				
QCTHL-SUS QCTHH-SUS	3 or more, under 6		Spacer [QCASP] is required.					
	6	A	18	—	6	6.5	3.4	28
	Over 6, 14 or less	B		35				
12	A	—		12				
Over 12, 20 or less	B		35					

QCASP SPACERS



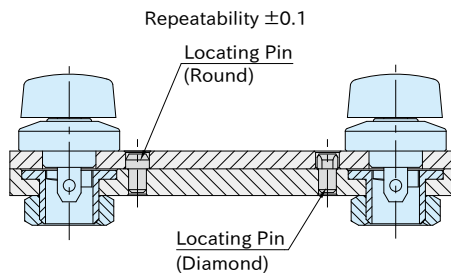
Accuracy

■ Machining Accuracy



Spacing tolerance on both the subplate and the base plate should be ± 0.04 .

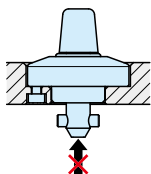
■ Repeatability



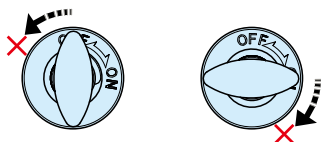
For higher accurate locating, use locating pins.

⚠ Caution

- Note the following cautions using [QCTH](#)
[QCTH-SUS](#) [QCTHL-SUS](#) [QCTHH-SUS](#) 0525-10
- Any force over 600N or more on the tip of the shaft from any direction can damage the pin.



- The knob operating torque is 0.4 N·m.
- Note that the excessive operating torque over 2 N·m can damage the pin.



Reference

- "How To Install" of [QCTH-N](#)/[QCTH-B](#)
[QCTH-N-SUS](#) [QCTH-B-SUS](#) Cam Receptacles
- Spacer [QCASP](#) is required for 3mm or more, under 6mm plate thickness.